

This is a great  
time of year to go  
Eagle  
Watching

Bring your binoculars and head to  
the Howell Station area—on the  
Des Moines river, just below the  
Lake Red Rock dam



## March Fun

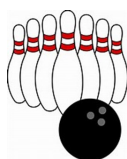
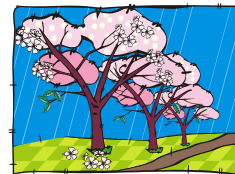
- Shamrock or rainbow cookies for St. Patrick's Day
- Scavenger hunt
- Checkers or chess or cards
- Make dollhouse furniture
- Geocaching
- Build a robot
- Do some science experiments
- Hiking
- Painting
- Mouse trap car or paper airplanes or egg drop challenge
- Pella Public Library "Lego Drop In" The library provides the legos and you bring the creative ideas—then build it! Check the library website for times/days
- Spring is coming!



# JUMP for Kids

Journey Up Mentoring of Pella

**March 2016**



**A treat for JUMP matches!**



Your choice of  
A bowling certificate OR a pizza coupon  
Just contact Jill if you would like either



Looking for a great opportunity  
to serve together?  
Here is an idea.

## Meals from the Heartland

Provides food for people in need  
around the world.

Third Reformed Church is  
hosting a morning of meal pack-  
aging on

Saturday, March 12 8am—Noon  
One hour shifts  
All ages are welcome

For more information and to  
sign up see the  
Third Church website  
[www.trcpella.org](http://www.trcpella.org)  
Scroll down on the home page and click  
on Meals from the Heartland

THANK YOU  
to the  
**Pella Community  
Foundation**

The PCF recently granted  
\$325 to JUMP for Kids  
for the purchase of  
JUMP super heroes  
capes.

These capes will be used  
to identify our volun-  
teers at JUMP Heroes 5K  
races, and at the Tulip  
Time Kids Korner.



Thursday, March 17  
St. Patrick's Day



Easter is  
Sunday March 27